

# Requirements

# LIGHTHOUSE ACADEMY



**No Cost for  
students or  
families**



**2.5 GPA  
required**



**WIDA Language  
Proficiency  
Required**



**No FAFSA or  
Financial  
documentation**

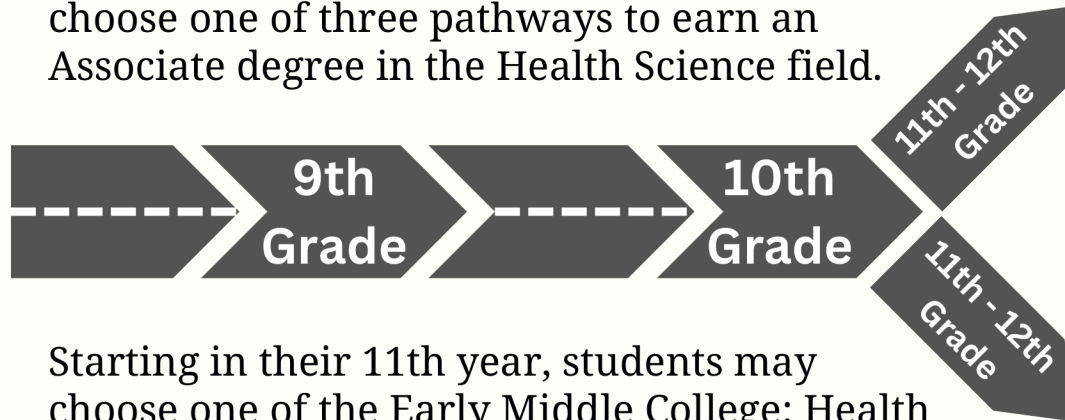
## Early Middle College



**Graduate with a High School  
Diploma and Associate Degree**

Lighthouse Academy has partnered with Ferris State University to provide the Early Middle College to students as a career readiness program at no cost to students or their families.

High School students follow the traditional path to earn their diploma until 10th grade. At the end of their 10th year, students may choose one of three pathways to earn an Associate degree in the Health Science field.



Starting in their 11th year, students may choose one of the Early Middle College: Health Sciences Pathways begin completing coursework which counts toward both a High School Diploma and an Associate degree. All classes are held on-site at Lighthouse Academy.

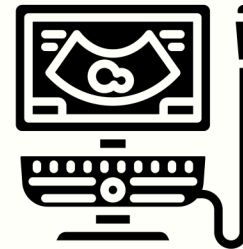
*Students who start the EMC program but do not successfully complete the practicum will receive a certificate instead of an Associate Degree.*

## Health Science Degrees



### Dental Hygienist

A Dental Hygienist is a skilled medical professional who performs various duties under the supervision of a Dentist to help patients achieve and maintain good oral health.



### Diagnostic Medical Sonography

Diagnostic medical sonographers specialize in creating images, sonograms or ultrasounds, that depict the body's organs and tissues.



### Medical Assisting

Medical assistants perform administrative and clinical duties such as maintaining patient records, preparing patients and rooms for examination, assisting with exams, and front-desk tasks.

